

# Minipiling for Foundations

## Minipiling for Foundations in Cornwall and Devon

Minipiling and micropiling is suited to providing affordable foundation solutions for sites where a suitable bearing surface is at a depth that makes traditional foundations uneconomic.

Mini-piles are reinforced concrete filled steel tubes that are drilled into the bedrock from the surface.

A variety of drilling rigs are available to install mini piles, some of which will fit through a domestic doorway.

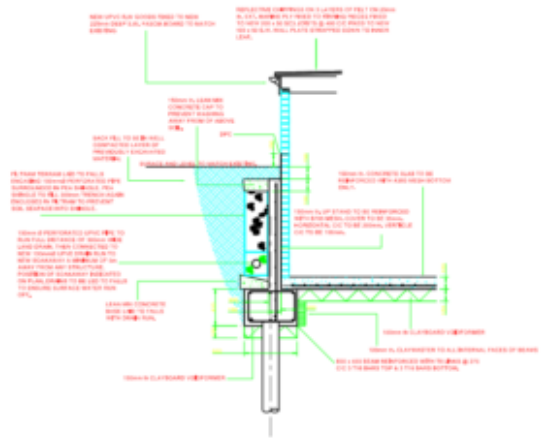
Mini piling can also be used on sites where excavation of the existing ground is ill advised due to contaminated ground or a high water table.

Mini Piles are also widely used for the [remediation of mining features](#).

We can install piles between 85mm and 250mm diameter at depths of up to 20 metres from surface.

[Contact Us](#) if you would like further information on this service.

```
ngg_shortcode_0_placeholder"          order_by="sortorder"  
order_direction="ASC"                 returns="included"  
maximum_entity_count="500" ]
```



Typical Piling Design Detail